



Landscaping you will love  
for every season of your life.

Landscaping  
Idea Book | 2017



Landscaping you will love  
for every season of your life.

# Landscaping Idea Book | 2017

Landscape Design & Installation	6
Arbors & Pergolas	10
Water Features	16
Water Falls	18
Streams	19
Water Fountains	20
Garden & Koi Ponds	21
Patios & Outdoor Kitchens	22
Patios & Decks	23
Bars & Grills	30
Fire Features	34
Entrances	39
Walkways & Garden Paths	44
Retaining Walls & Steps	49
Planning Grid	54
Getting Started with Your Project	55

## Welcome to the Landscape Idea Book

Here you will find a sampling of just a few of the outstanding design projects Green Impressions Landscaping creates throughout greater Cleveland.

One of the best ways to get a feel for our design capabilities and expertise is to take a tour of our work. We strive to inspire.

Check out the various design categories for some great landscaping ideas for your next project. You may be looking for custom landscaping with projects involving outdoor kitchens, water features, patios, pools, walkways and garden paths, or have an original idea of your own.

Your home's exterior surroundings are just as important as what is inside. Whether it's a finely manicured lawn and grand entrance way, an infinity edge pool & spa, an outdoor fireplace, kitchen and dining area, or perhaps a waterfall garden just outside your office – your exterior grounds will be enhanced by the same attention to detail as your interior space.

We hope you enjoy our Green Impressions Idea Book and have fun imagining an enhanced outdoor living experience. Please feel free to contact us if you have questions about these examples or to discuss other design possibilities.



Projects featured in this guide are designed to help inspire you to develop ideas for your landscape project.

As your creative inspirations emerge, pay attention to colors, shapes, textures, and other elements that will enhance your landscape oasis. In the same way that designing a house involves more than selecting paint colors or window styles... great landscape design means looking at the big picture.

Here are some questions you might ask yourself as you explore this book:

- Do I want formal or informal Style?
- Will I want to maintain the property myself?
- Will I need privacy to screen out an undesirable view or neighborhood noise?
- What are my favorite colors?
- What do I like most about my yard?

**Need Help?** Please feel free to contact us if you have questions about the example presented here or to discuss design possibilities. Our expert designers will look at your home's landscape with a trained and critical eye. We create a plan that takes into account your ideas, lifestyle, preferences and budget. We'll listen to your concerns and ask questions to create the right plan for you.





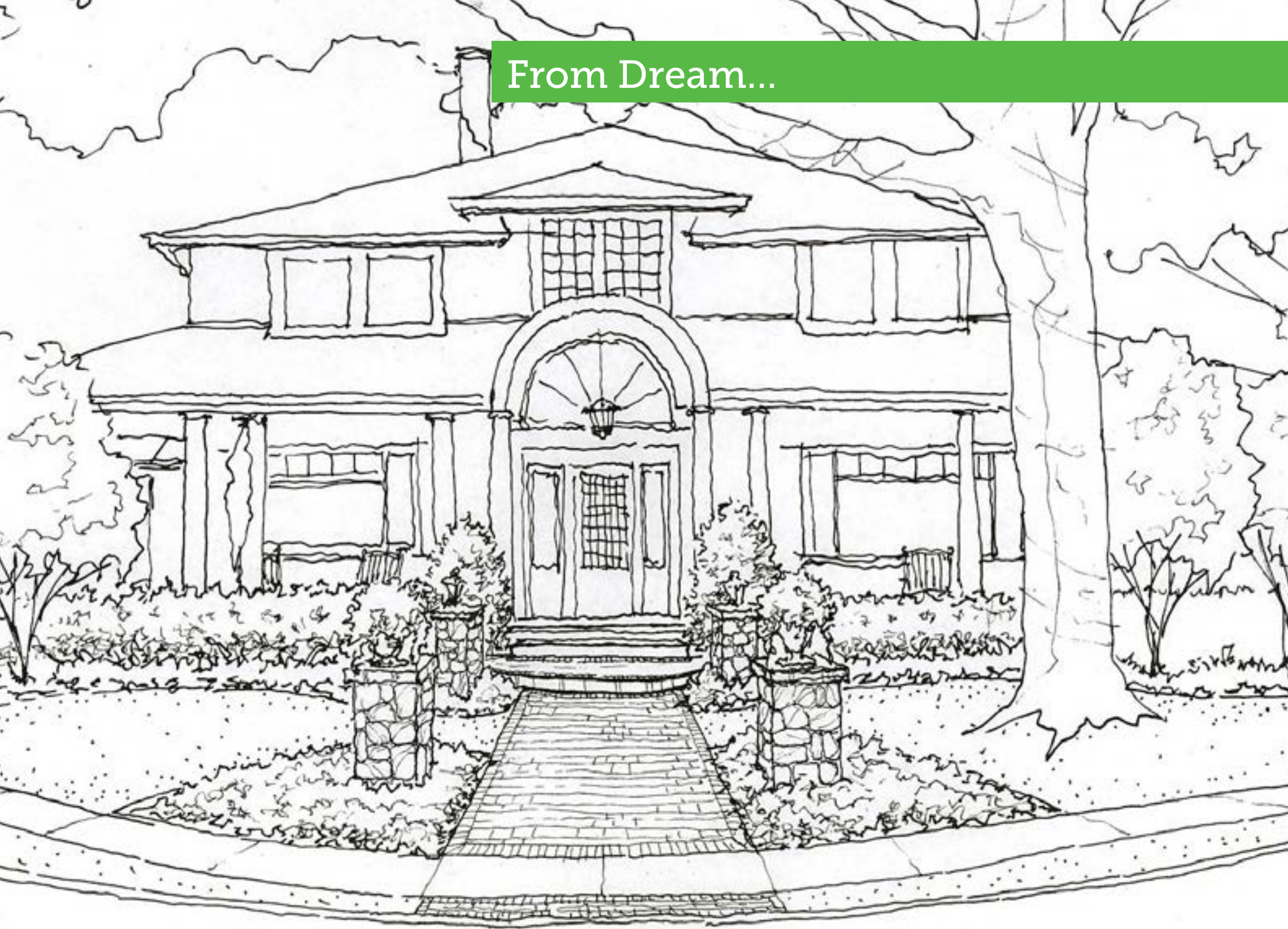
# Landscaping Design & Installation

Creating a remarkable landscape starts with the development of a strong plan followed by quality installation. You may simply need a “foundation plan” by a knowledgeable landscape designer to create attractive plant combinations that fill out your existing areas, or a more comprehensive approach for complex projects. Green Impressions landscape design and installation services encompass properties of all sizes, from sweeping lakefront estates to downtown colonials and smaller homes. In the landscape Design & Installation section we feature before and after examples of our work to wet your appetite.

Green Impressions strives to provide clients with an award winning landscape design where they can connect with nature’s beauty and redefine their home to include the outdoors. Whether you are creating a pool with a lake view or a perennial garden alongside an entertainment patio, Green Impressions skilled landscape installation architects and construction professionals will meticulously design and build the optimal landscape for your property.

- Our expert designers look at your home’s landscape with a trained and critical eye. We create a plan that takes into account your ideas, lifestyle, preferences and budget. We’ll listen to your concerns and ask questions to create the right plan for you. We design with the Northern Ohio climate in mind. With our experience, expertise, and education we can ensure that you’ll have great design & flowering plants all season long.
- Our highly-trained landscape installation team creates your outdoor living area using the finest quality materials and plant specimens. We won’t compromise details.

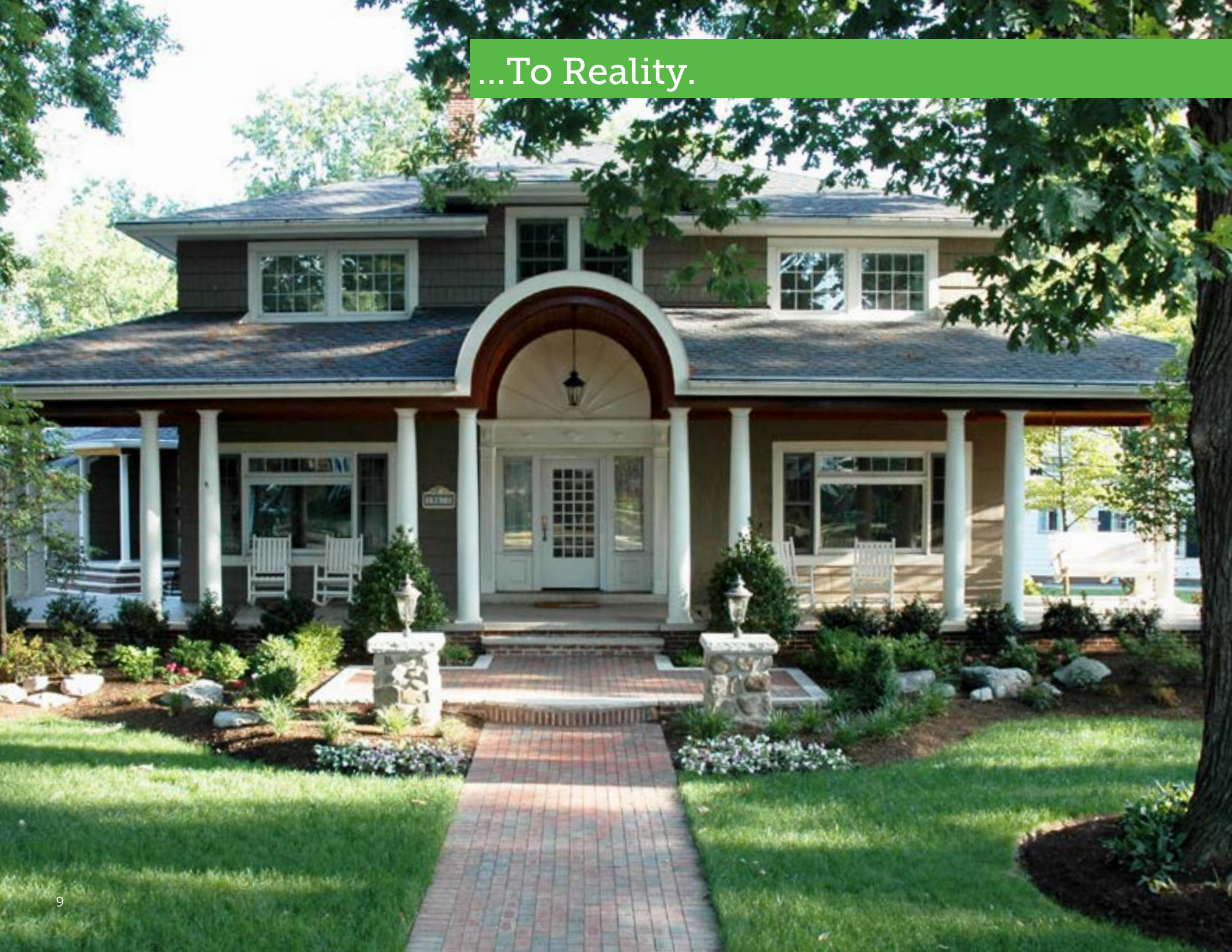
From Dream...







...To Reality.



## Pergolas & Arbors



**Pergolas and Arbors** add vertical beauty and “Wow” to your garden, patio, entrance-way, or pool area.

Pergolas will make your landscape come alive.







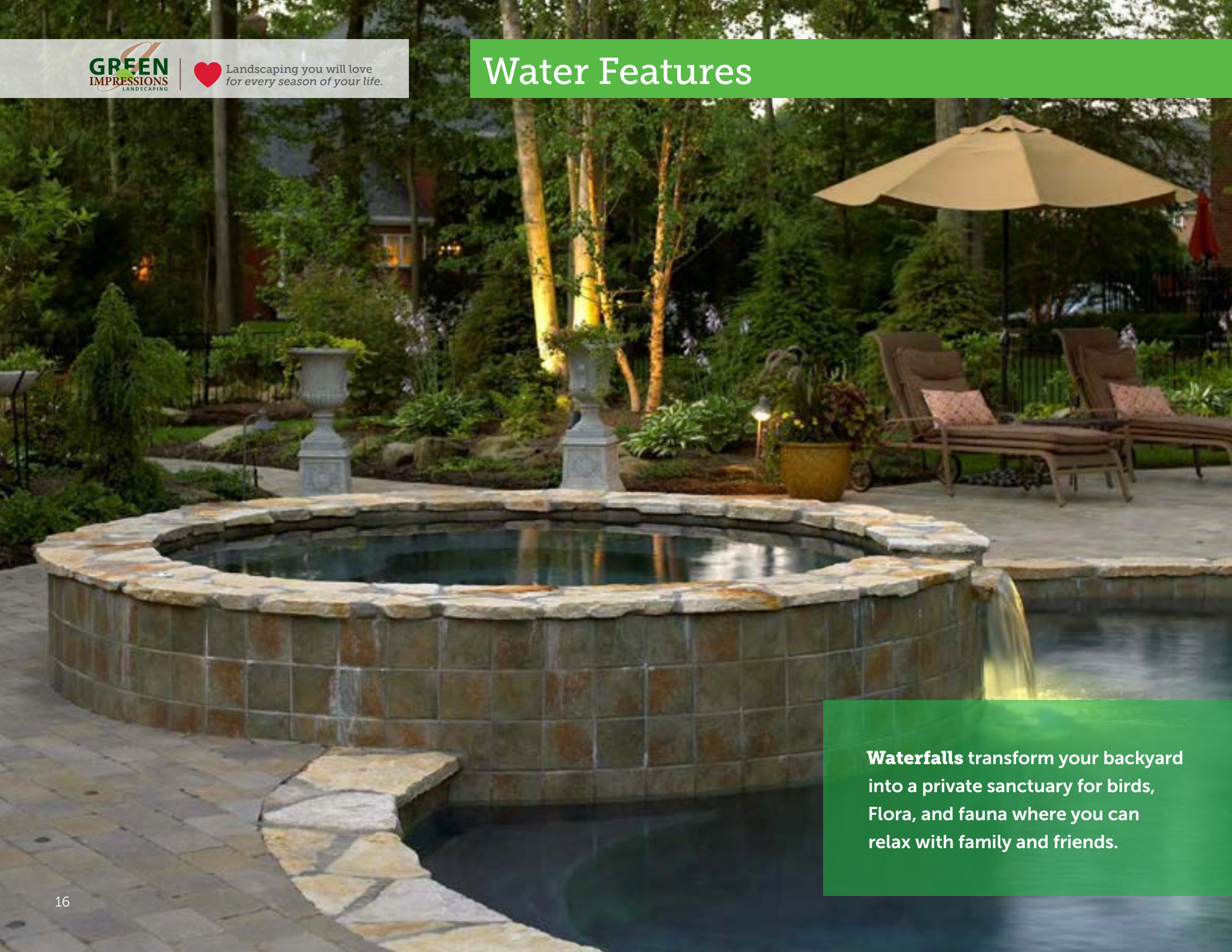


Imagine a beautiful arbor surrounded by lush gardens shading a dining table decorated with overflowing planters..





# Water Features

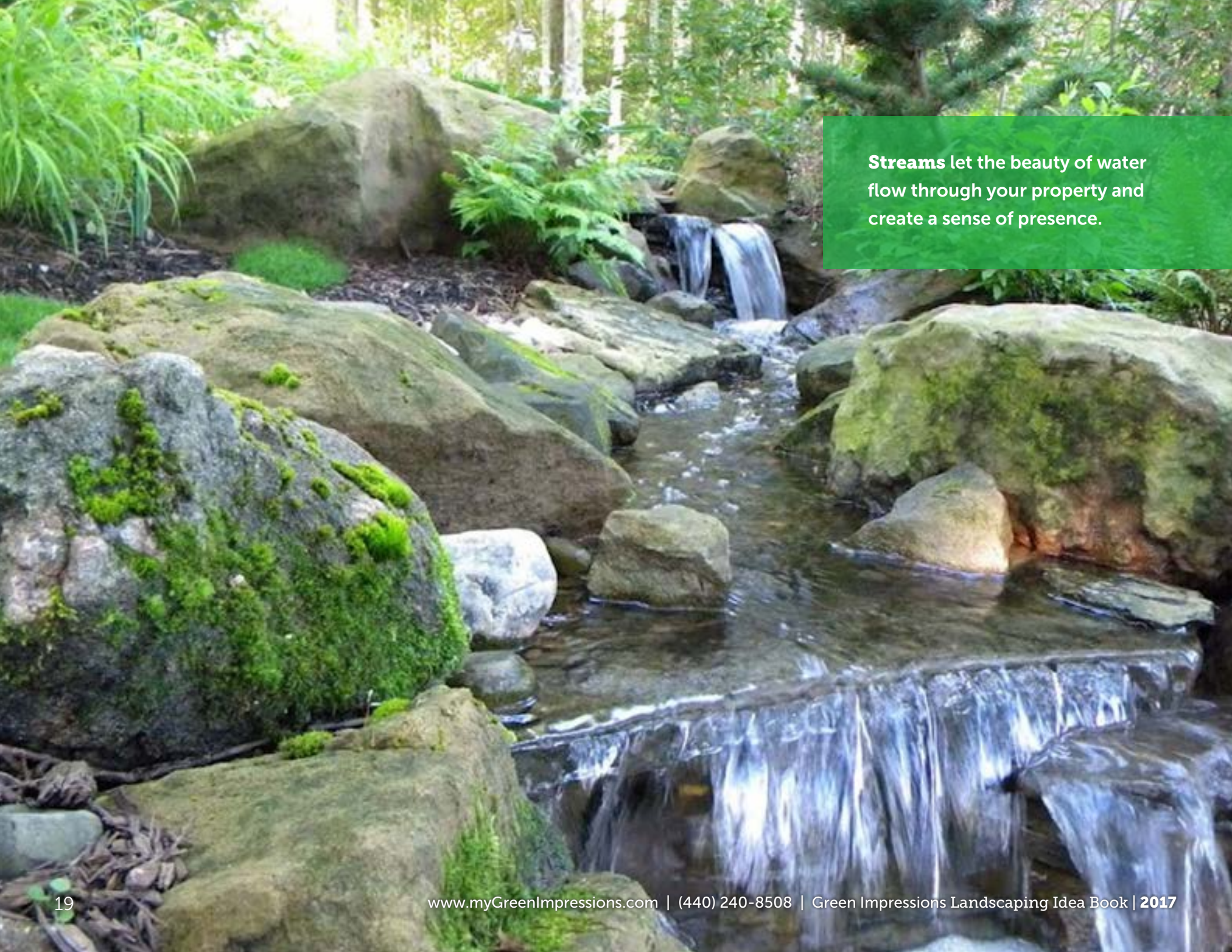


**Waterfalls** transform your backyard into a private sanctuary for birds, Flora, and fauna where you can relax with family and friends.









**Streams** let the beauty of water flow through your property and create a sense of presence.

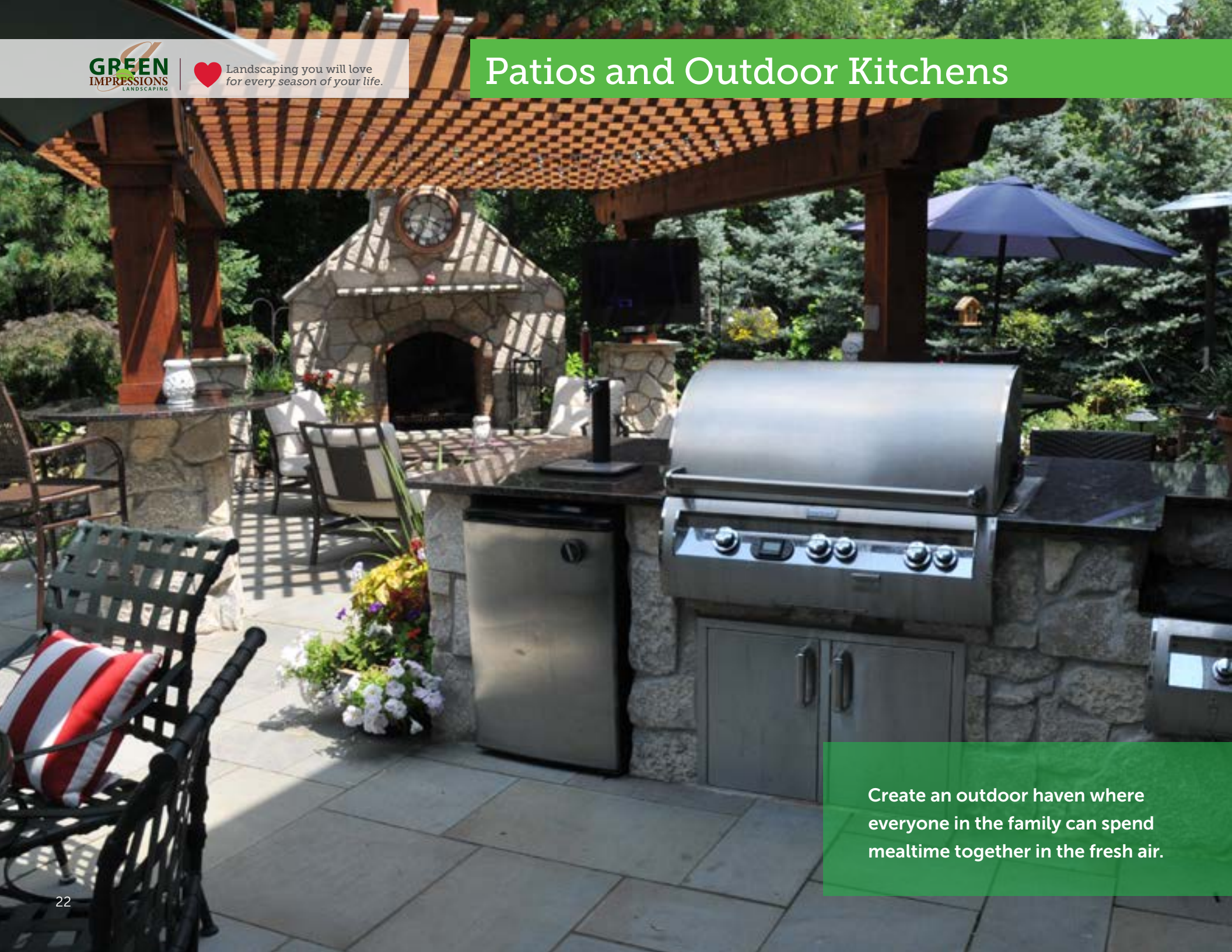


**Fountains** fit easily into patios and garden areas. Celebrate an intimate section of your garden with bubbling sounds from a gently flowing fountain or make a bold statement as a focal point.



**Water gardens and ponds** from quiet, still, shallow ponds to active formal pools adorned with colorful Koi fish create an important source of water to backyard wildlife.

# Patios and Outdoor Kitchens



Create an outdoor haven where everyone in the family can spend mealtime together in the fresh air.

















## Bars and Grills



Do you love to grill outdoors with family and friends? Make it a tradition at your house by designing an **outdoor kitchen, bar, or dining area.**









## Fire Features



**Outdoor Fireplaces** add a contemplative touch to a restful seating area by your outdoor fireplace where you can read a book, watch TV, enjoy the sunset, or sit under the stars.

Extend your outdoor season with an intimate **fire pit**. Throw on a sweater, stoke the fire and gaze at the stars on cool nights.



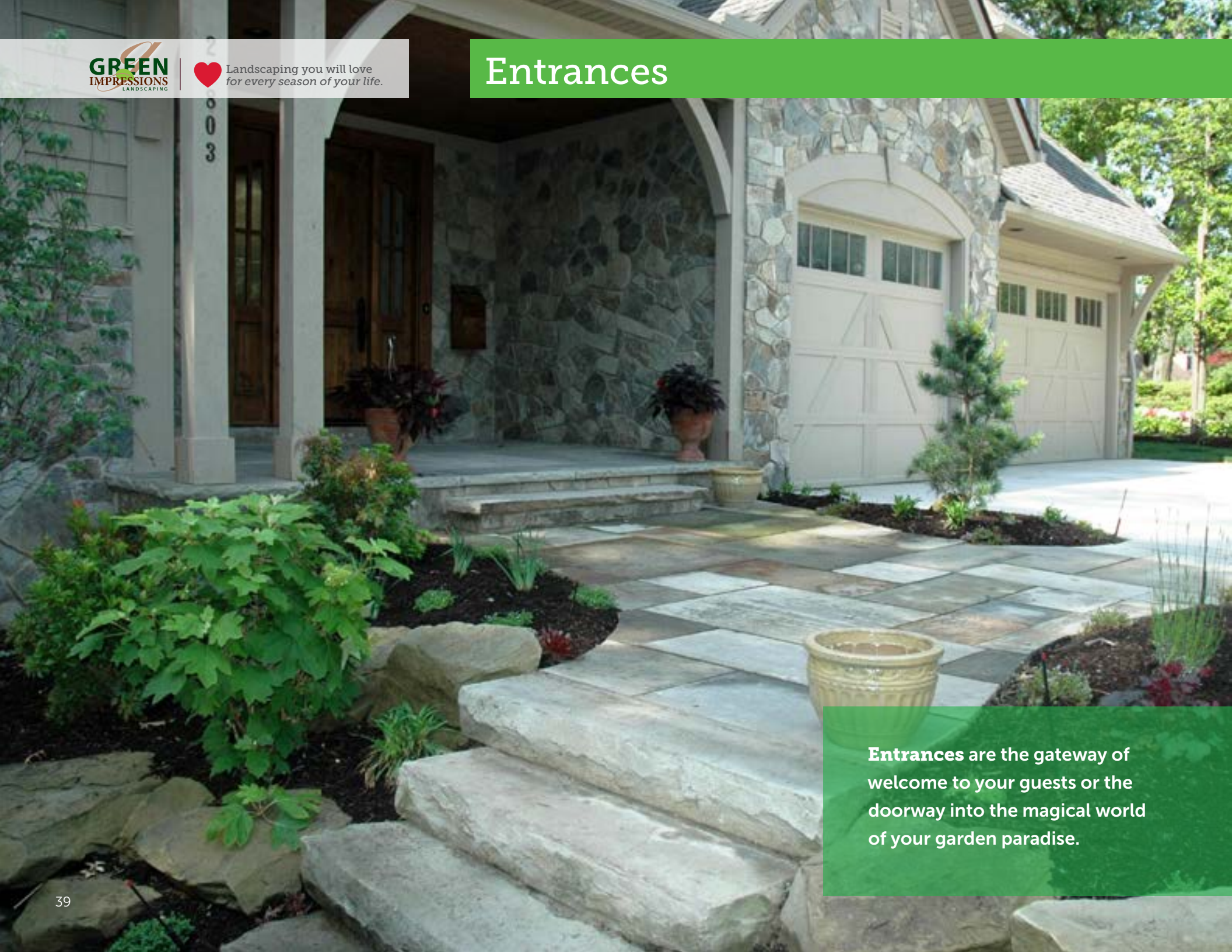








# Entrances



**Entrances** are the gateway of welcome to your guests or the doorway into the magical world of your garden paradise.












# Walkways & Garden Paths



**Walkways** make your backyard paradise accessible by installing a decorative, functional walkway that conveys a warm sense of welcome and comfort.







**Garden Paths** offer the opportunity to meander down the garden path and explore everything your beautiful landscape has to offer.



# Retaining Walls and Steps



**Retaining Walls** are an integral piece of a well designed landscape. Stone retaining walls and steps not only let you sculpt an engaging scene, they can play a crucial role in providing proper drainage and runoff.









Date:

Landscape Planning Grid (1/4in=1ft)





Landscaping you will love  
for every season of your life.

# Getting Started with Your Project:

## Your Landscaping Deserves to Make a Green Impression.



**Now is the time** to begin your FREE initial discovery consultation. Together, we explore and discuss your dream project's goals, review your current landscape situation, and discuss its unique challenges.

**Our creative design team** will then prepare your comprehensive landscaping plan and design estimate that outlines and presents each phase of your project.

**Your dream project** is then installed by our team of professionals who will work closely with you to ensure your unique landscape design dreams are realized.

**We maintain & enhance** your project upon completion through our lawn and landscape care plans to ensure you love your landscaping each and every day.



In the same way that designing a house involves more than selecting paint colors or window styles... good landscape design means looking at the big picture. Start by considering what your home has now ... such as a deck, patio, children's play area or water feature. You may simply need a "foundation plan" by a knowledgeable landscape designer. This plan creates attractive plant combinations that fill out your existing areas.

The expert designers at Green Impressions look at your home's landscape with a trained and critical eye. We create a plan that takes into account your lifestyle, preferences and budget. We listen to your concerns and ask questions to create the right plan for you. Some of these questions include:

With our experience and education, we design with the Northern Ohio climate in mind. We can ensure that you have flowering plants all season long. Our design service is included in all landscape installations. Our design process starts with a no cost or obligation consultation to begin creating the perfect plan for you.

**Contact Green Impressions Landscaping to schedule a consultation with one of our professional designers at (440) 240-8508.**

842 Abbe Road, Sheffield Ohio 44054  
(440) 204-8508  
www.myGreenImpressions.com  
info@myGreenImpressions.com

